

Just a Cup of Coffee

E♭ Lead Sheet

composed by Elaine Paul Alt

1 $\text{C}\#-9$ $\text{F}\Delta\#11$ $\text{B}\Delta7$ $\text{C}\#-9$ $\text{F}\Delta\#11$
MM MM MM

4 $\text{B}\Delta7$ **A** $\text{E}-\Delta7$ $\text{A7}\#11$ $\text{D7}\flat9$ $\text{C7}\flat9$ $\text{C}\#7$ $\text{C}\#-7$
MMM I COULD GIVE MY-SELF IF THAT'S WHAT YOU WANT I COULD GIVE MY-SELF TO

8 $\text{F}\#7$ $\text{E}-\Delta7$ $\text{A7}\#11$ $\text{D7}\flat9$ $\text{C7}\flat9$ $\text{C}\#-7$ $\text{F}\#7$ $\text{B}\text{sus}7$ $\text{F}\#7/\text{A}\#$
YOU. IN A MO-MENT, YOU CAME INTO VIEW STARING BACK AT ME, DID YOU KNOW?

13 **B** $\text{F}-9$ $\text{B}\flat7$ $\text{G}-7$ $\text{C7}\flat9$ $\text{F}-7$ $\text{B}\flat7$
WOULD YOU LIKE A TICK-ET TO TO-K-YO? DO YOU WANT TO SHARE STOR-IES GROWING

16 $\text{E}\flat\Delta7$ $\text{D}-9$ $\text{G}7$ $\text{C}\Delta7$
OLD? WHY ARE WE SEARCHING, WHAT'S THE REA-SON? ARE WE AN

19 $\text{G}\#\Delta9$ $\text{C}\#9$ $\text{B}+7$
AN-TI-OTE TO THE GREY SKIES, TO THE SEA-SON? I COULD

21 **A** $\text{E}-\Delta7$ $\text{A7}\#11$ $\text{D7}\flat9$ $\text{C7}\flat9$ $\text{C}\#-9$ $\text{F}\Delta\#11$ $\text{B}\Delta7$
GIVE MY-SELF, DO I HAVE A CHOICE? DO WE SHARE THE SAME DESPERATE IN-NER VOICE?

$\text{B}\Delta7$ $\text{C}\Delta7$ $\text{B}\Delta\#11$

News from Milan

E♭ Lead Sheet

composed by Elaine Paul Alt

Intro

Alap

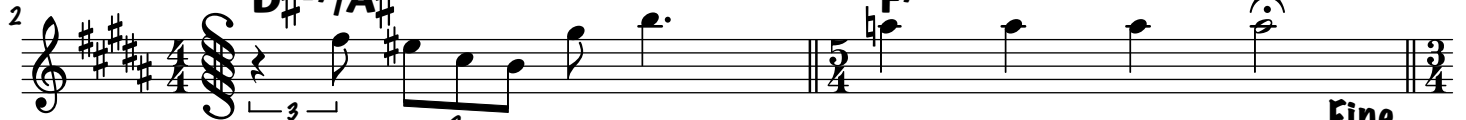
D#-7/A#



Verse

Rubato (♩ = 66)

D#-7/A#



A COMFORTING VOICE SAYS: "I AM PEACE - FUL." **Fine**

F#-

F#-/B

C#7

A#°



"LIFE IS SIM - PLE AND PEACE - FUL THESE DAYS."



"YOU SOUND HAP - PY."

Chorus

♩ = 180

D-

D-/C#

B°

A7#11

A7#11/G#

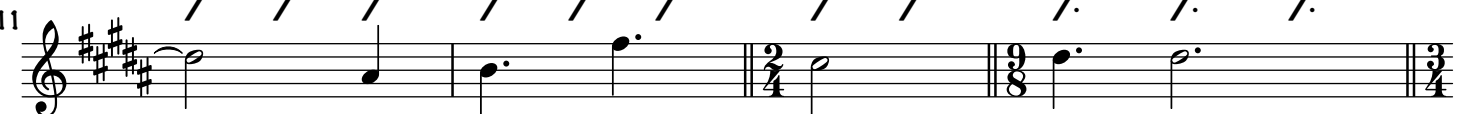


DO YOU KNOW I FAN - TA - SIZE?

C#-7

C#-9/D#

E△#11



NEED TO BE - LIEVE YOU TRUST

F#△7

G#-13

A#7b9



MY FEEL - INGS ARE TRUE.

Solos on **Chorus**

Head out on **Chorus**

D.S. **Verse** al Fine