

# A LAST LOOK AT LOVE

(ELAINE KEY)

CONCERT LEAD SHEET

COMPOSED BY ELAINE PAUL ALT

$\text{♩} = 132$  BACKBEAT 2+4 **PLAY 3X**

F-7 B $\flat$ -7 F-7

**A** BACKBEAT 2+4

F-7 B $\flat$ -7 F-7 B $\flat$ -7

I NE-VER ASKED HER FOR ALL OF HER HEART. IN JUST A GLANCE WE SHARED SUCH A WARM START.  
IT'S SUCH A FUN - NY TIME FOR AN AF - FAIR. YOU ALWAYS LOVE THE SWEET SMELL OF THE AIR.

SWING

F-7 B $\flat$ -7 D $\flat$ Δ7 D $\emptyset$

WE LISTENED TO THE BREEZE BLOWING THROUGH  
I'D GIVE IT ALL A - WAY FOR AN - OT -

D $\flat$ - G $\flat$ 7 C $\flat$ Δ7 C+7#9 F-7

THE SUN'S RAYS, SO EAS - I - LY.  
- THEIR COOL DAY WHERE I CAN SEE

**B** SWING

B $\flat$ Δ7 E $\flat$ -7 A $\flat$ 7 B $\flat$ Δ7 E $\flat$ -7 A $\flat$ 7

HER EYES. THOSE WON - ER-FUL GREEN EYES. THEY MAKE ME SING

G $\emptyset$  G $\flat$ Δ7 C $\emptyset$  F7 $\flat$ 9 B $\flat$ Δ7 E $\flat$ -7 A $\flat$ 7

AND BREATHE ALL NIGHT, IN TUNE, THOSE EYES. I'LL THINK OF THEM AL-WAYS.

B $\flat$ Δ7 E $\flat$ -7 A $\flat$ 7 D $\flat$ - G $\flat$ 7 C $\flat$ Δ7 C+7#9 F-7

THEY MADE ME O - PEN UP MY HEART ALL THE WAY.

D.S. FOR SOLOS ON

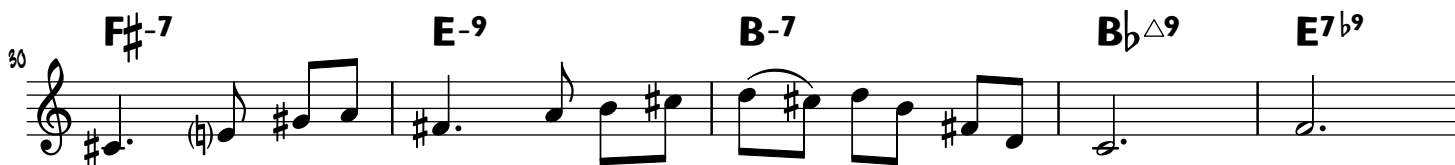
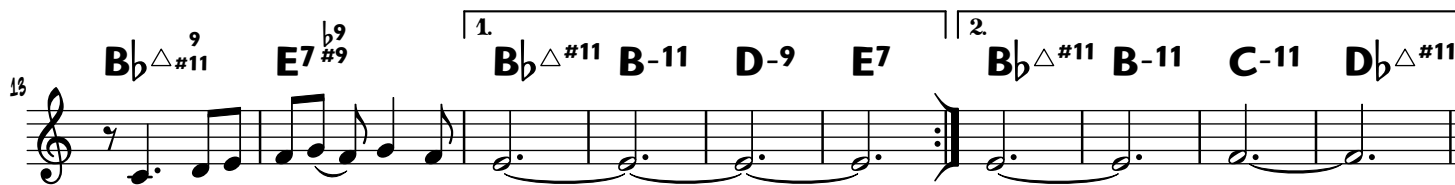
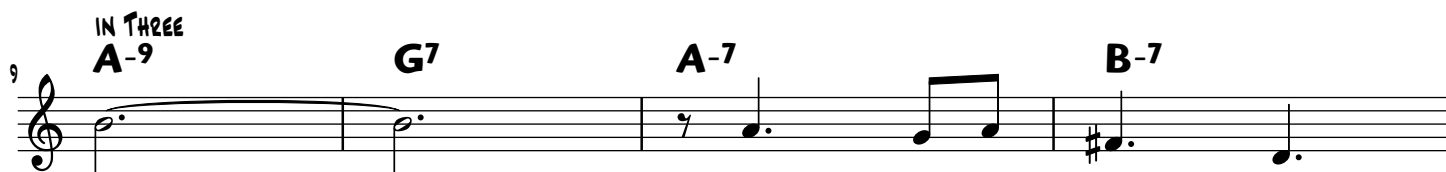
**A A B**

# THIS UNMEMORABLE EVENING

CONCERT LEAD SHEET

COMPOSED BY ELAINE PAUL ALT

INTRO IN ONE (♩ = 184)  
B $\flat$  $\Delta$  $\sharp$ 11



SOLOS ON  
A A B